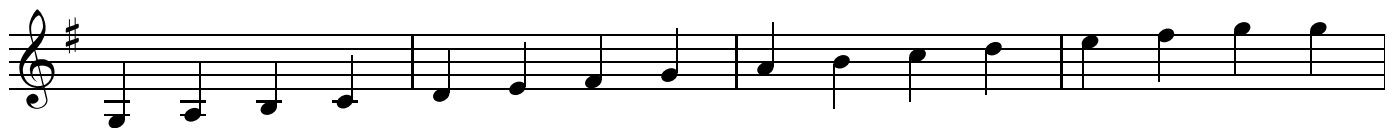


# Violin 2-octave scales

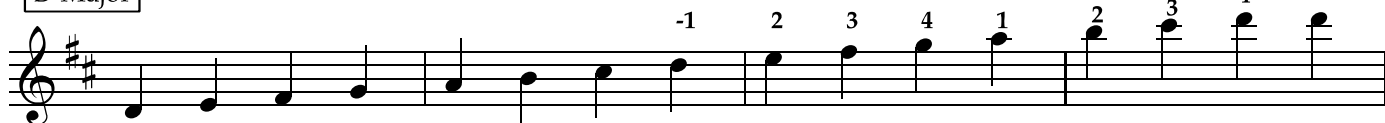
C Major



G Major



D Major



A Major



2

E Major

Musical staff for E Major, first line. Notes: E4, F#4, G#4, A4, B4, C#5, D5, E5. Fingering: -1, 2, 3, 4, 1, 2, 3, 4.

Musical staff for E Major, second line. Notes: F#4, G#4, A4, B4, C#5, D5, E5, D5, C#5, B4, A4, G#4, F#4. Fingering: -3.

F Major

Musical staff for F Major, first line. Notes: F4, G4, A4, Bb4, C5, D5, E5, F5. Fingering: -1, 2, 3, 4, 1, 2, -1, 2, 3, 4.

Musical staff for F Major, second line. Notes: G4, A4, Bb4, C5, D5, E5, F5, E5, D5, C5, Bb4, A4, G4. Fingering: -2, -2.

B-flat Major

Musical staff for B-flat Major, first line. Notes: Bb4, C5, D5, Eb5, F5, G5, Ab5, Bb5.

Musical staff for B-flat Major, second line. Notes: C5, D5, Eb5, F5, G5, Ab5, Bb5, Ab5, G5, F5, Eb5, D5, C5.

E-flat Major

Musical staff for E-flat Major, first line. Notes: Eb4, F4, G4, Ab4, Bb4, C5, D5, Eb5. Fingering: -1, 2, 3, 4, 1, 2, 3, 4.

Musical staff for E-flat Major, second line. Notes: F4, G4, Ab4, Bb4, C5, D5, Eb5, D5, C5, Bb4, Ab4, F4. Fingering: -3.

A-flat Major

Musical notation for the A-flat Major scale. The ascending line consists of the notes: A-flat, B-flat, C, D, E-flat, F, G, A-flat. The descending line consists of: G, F, E-flat, D, C, B-flat, A-flat. The scale concludes with a double bar line and a key signature change to A-flat major.

a minor

Musical notation for the a minor scale. The ascending line consists of the notes: A, B-flat, C, D, E-flat, F, G, A. The descending line consists of: G, F, E-flat, D, C, B-flat, A. The scale concludes with a double bar line and a key signature change to a minor.

e minor

Musical notation for the e minor scale. The ascending line consists of the notes: E, F, G, A, B, C, D, E. The descending line consists of: D, C, B, A, G, F, E. Fingering numbers are provided above the notes: -1, 2, 3, 4, 1, #2, #3, 4. The scale concludes with a double bar line and a key signature change to e minor.

b minor

Musical notation for the b minor scale. The ascending line consists of the notes: B, C, D, E, F, G, A, B. The descending line consists of: A, G, F, E, D, C, B. The scale concludes with a double bar line and a key signature change to b minor.

f-sharp minor

Musical notation for the f-sharp minor scale. The ascending line consists of the notes: F-sharp, G, A, B, C, D, E, F-sharp. The descending line consists of: E, D, C, B, A, G, F-sharp. Fingering numbers are provided above the notes: -1, 2, -1, #2, #3, 4. The scale concludes with a double bar line and a key signature change to f-sharp minor.

A musical staff in treble clef with a key signature of three sharps (F#, C#, G#). The notes are: F#4, G#4, A4, B4, C5, B4, A4, G#4, F#4, E4, D4, C4. Fret numbers -2 and -2 are written above the first and second notes.

c-sharp minor

A musical staff in treble clef with a key signature of three sharps (F#, C#, G#). The notes are: F#4, G#4, A4, B4, C5, B4, A4, G#4, F#4, E4, D4, C4. Fret numbers -1, 2, 3, 4, 1, 2, 3 are written above the last seven notes.

A musical staff in treble clef with a key signature of three sharps (F#, C#, G#). The notes are: F#4, G#4, A4, B4, C5, B4, A4, G#4, F#4, E4, D4, C4. Fret number -2 is written above the first note.

d minor

A musical staff in treble clef with a key signature of two sharps (F#, C#). The notes are: F#4, G#4, A4, B4, C5, B4, A4, G#4, F#4, E4, D4, C4. Fret numbers -1, 2, 3, 4, 1, 2, 3, 4 are written above the last eight notes.

A musical staff in treble clef with a key signature of two sharps (F#, C#). The notes are: F#4, G#4, A4, B4, C5, B4, A4, G#4, F#4, E4, D4, C4. Fret number -2 is written above the first note.

g minor

A musical staff in treble clef with a key signature of one sharp (F#). The notes are: F#4, G#4, A4, B4, C5, B4, A4, G#4, F#4, E4, D4, C4. A sharp sign (#) is written above the eighth note.

A musical staff in treble clef with a key signature of one sharp (F#). The notes are: F#4, G#4, A4, B4, C5, B4, A4, G#4, F#4, E4, D4, C4. A sharp sign (#) is written above the eighth note.

c minor

A musical staff in treble clef with a key signature of no sharps or flats. The notes are: F4, G4, A4, B4, C5, B4, A4, G4, F4, E4, D4, C4. Fret numbers -1, 2, 3, 4, 1, 2, 3 are written above the last seven notes.

A musical staff in treble clef with a key signature of no sharps or flats. The notes are: F4, G4, A4, B4, C5, B4, A4, G4, F4, E4, D4, C4. Fret number -2 is written above the first note.

f minor

A musical staff in F minor (one flat) showing a sequence of notes: F4, G4, A4, Bb4, C5, Bb4, A4, G4, F4. Above the staff, fingerings are indicated: -1 (F4), 2 (G4), -1 (A4), 2 (Bb4), 3 (C5), 4 (Bb4), 5 (A4).

A musical staff in F minor (one flat) showing a sequence of notes: Bb4, Bb4, A4, G4, F4, E4, D4, C4, B3, A3, G3, F3. Above the staff, fingerings are indicated: b (Bb4), b (Bb4), -2 (A4), -2 (G4).